



In Touch

<http://parishes.lincolnshire.gov.uk/ColsterworthandDistrict/>

News for the villages of Colsterworth, Woolsthorpe, Stainby, Gunby, North Witham and Lobthorpe

Edited by Stuart Whitcombe 5 Stephenson Close, NG33 5GP 0777 323 0815 stuartwhitcombe@hotmail.co.uk

Children's Toy and Book Jumble Sale

Saturday 14th April
10:30 am - 12 Noon



Colsterworth Methodist Church

Lots of items at Low - Low prices

Colsterworth and District Parish Council

NORTH WITHAM & LOBTHORPE

Parish Councillor Casual Vacancy

Parishioners/Residents willing to be co-opted or stand for election to the Parish Council should make application to:

Parish Clerk, email: clerk.colsterworthpc@gmail.com

Applications must be received by Friday 20th April 2018

Parish Clerk
Colsterworth and District Parish Council
25th March 2018

Join our

Wheelie Wheelie Eggcellent

Pram Race

Open to anything with wheels and powered only by two legs.
Extra points for fancy dress!

Sunday April 1st at 11am

£5.00 entry fee per team – prizes for winners

Starting and finishing at the new Co-op Store,

Colsterworth

For entry forms and further details contact organisers
Kayleigh Stubbs (07792528587) or Wendy Stubbs (07960461772).

Entry forms can be picked up from the Co-op.



Proceeds to Colsterworth Parent and Toddler Group



FACTORY OUTLET SHOP

- Golf Clothing & Accessories
- Country Style Clothing
- Luggage / PVC Bags
- Workwear

Open: 9:30am - 4:30pm

MONDAY - FRIDAY

NEW MILLS, NORTH WITHAM ROAD,
SOUTH WITHAM, GRANTHAM,
LINCOLNSHIRE, NG33 5QJ.
01572 768 008

Auriga

White Lion

High Street, Colsterworth

01476 861466

www.whitelioncolsterworth.co.uk/

Food every day noon to 8.45pm

Sunday Lunches

(booking advised)

Functions catered for

Selection of Real Ales

Beer garden

Thursday Quiz Night

Sports Television

Darts • Pool • Dominoes



Don't throw your PC through the window!

I'm Dennis and I can fix most hardware and software issues in your own home. And I'll sort out your internet and your networking problems too.

Call me
on 01476 860139
or 07733 323 657

www.computechnique.co.uk



The White Lion

St George's Day Celebrations

Saturday 21st April
Celebration lunch

Limited spaces so
book early

Live entertainment

4 'til 8

All welcome

J & J Building Contractors

Father and Son Team
Ring John
07976717590

All types of Building &
Home Improvements

**NO JOB TOO SMALL
FREE QUOTE AND ADVICE**



**PAUL R. AITMAN
LOCKSMITH**

P A LOCKSMITH & KEY CUTTING

07971 966061

Paulaitman@icloud.com
www.palocksmiths.co.uk

- ✓ 24hr Service
- ✓ Residential & Commercial
- ✓ Lockouts
- ✓ Emergency Entry
- ✓ Lock Repairs
- ✓ uPVC Repairs
- ✓ 24/7 Security Boarding (Window Boarding)

Merle Dekanski A.Phys MIAAT Registered Animal Physiotherapist

Canine Specialist

Helps animals with joint, soft tissue and neurological problems

Promotes quality repair after injury and surgery

Provides sports therapy and maintenance for working, performance and companion pets



phone: 07855 724359
info@canisage-one2one.co.uk
www.canisage-one2one.co.uk

Parish Council Report

Parish Clerk - 01476 861888
clerk.colsterworthpc@gmail.com

Clerks Report and items arising from the Minutes.

- a) A press release was made in the Grantham Journal and Stamford Mercury in relation to the increased serious and fatal accidents on the A1.
- b) The new bank mandate has been confirmed as processed and live by HSBC.
- c) The pedestrian ramp situated outside the new COOP has been reported to LCC Highways as dangerous. LCC Highways are urgently looking into making this safe. The area has now been coned off for safety. LCC Highways and the contractors are in dispute over the responsibility. The Clerk will follow this up.
- d) Lincolnshire Police have been contacted in relation to the Police Station on Back lane and information has been received and under review.
- e) The Parish Council have sent a letter to Colsterworth Trust Estates/Stoke Rochford raising questions on the proposed development of the Woolthorpe Playing area. The letter has been acknowledged suggesting a potential meeting date the middle of March.
- f) Request from the Nature Trail to purchase high viz vests from allocated fund.

Finance

Accounts for payment were approved by the council. Accounts and Bank reconciliation can be viewed on the parish website <http://parishes.lincolnshire.gov.uk/ColsterworthandDistrict/>

Correspondence

Email received objecting to the Colsterworth Trust/Stoke Rochford proposals to develop on the Woolthorpe Playing area.
Telephone call received from a new resident in the High Street concerned about the state of repair of the derelict garage close to his property.

Email received regarding standing water on the road at the entrance to the new COOP car park. Reported to Highways by the Clerk.

Request to use two photographs from the Parish Website to use on 'The Tracks Through Grantham' website.

Email Received 'Activate your Community' Holiday clubs.

GDPR update. DPO to be an external individual.

Colsterworth Church, Isaac Newton Project have been successful in winning a lottery grant of £10,000 from the Heritage Fund.

Letter received regarding the Junior Eyes Booklet.

Planning Applications

LCC PLANNING

The following applications were received:

None

LCC PLANNING – Enforcement

None

SKDC PLANNING

The following applications were received:

S18/0110 – Loft conversion including insertion of dormer windows. 9 Bourne Road.

S18/0248 – Fell Alder Tree, remove lower horizontal branches overhanging boundary. 26 Newton Way.

S18/0246 – Change of use of land to create trailer parking area, A1 Truck Stop.

SKDC Planning Permission Approval

S17/2469 – COOP Food. Erection of signage. COOP Bridge End, Colsterworth.

S17/2482 – Alterations to building within curtilage of a listed building. The Hollies, Back Lane.

S17/2481 – Alterations to and change of use of building to residential accommodation. The Hollies, 18 Back Lane.

S18/0033 – Cut back branches of apple tree 1.5m. 22 Newton Way.

SKDC Planning Enforcement

None

SKDC Planning Withdrawal

S17/0979 – Proposed 2 story dwelling. Land rear of 15 Stamford Road.

SKDC Planning Appeal

None

Matters requiring attention such as potholes and faulty street lights

a) Standing water outside the entrance to the New COOP has been reported to the LCC Highways Department who are investigating.

b) The damaged road surface on Back Lane close to Millfield House has been reported to LCC Highways.

Temporary Footpath Closure

Reason for closure: Essential maintenance works by Sustainable Energy Ltd

Location: Link footway between Back Lane & Beech Close

Period of Closure: 09/04/18 – 13/04/18

(Closure to be implemented as & when required during this period, signage detailing accurate dates & times will be displayed on site in advance)

Alternative Route: Local diversion routes & access arrangements will be signposted

For any queries or further information, please contact LCC Customer Service Centre on 01522 782070

Leicestershire County Council Notification

Road Closure/Two Way Traffic Light Control: Saxby Road (B676), Freeby, Leicestershire

Unfortunately, the proposed carriageway resurfacing works have been cancelled due to poor weather conditions. The intention is to deliver these works after Easter when hopefully weather conditions will have improved.

RNR Driving Academy
Driver Training

- Beginner to Pass Standard
- Pass Plus Training
- Remedial and Refresher Training
- Advanced Standard Training
- Trailer Test Tuition

Emphasis on Skills for Life:

- Safety - Hazard Management
- Car Control
- Understanding and Enhance Personal Skills Enabling You to Respond Appropriately in All Situations

Building confidence in a safe learning environment
28 years Advanced Driving Experience

Individual Lessons or Intensive Courses to become a safer, greater skilled and more confident driver.

Local Instructor. Gift Vouchers available.

Contact Rod on 07866-565888
DVSA Certified ADI

Thorold and Kent
TV Aerial Specialists
We Specialise in Aerial Installations

- Freeview Upgrades
- Satellite Installations
- Radio Aerials - FM and DAB
- Storm Damage Repairs
- All Work Guaranteed

Call in or Telephone 01476 571507
78 Bridge End Road, Grantham

Gainsborough Corner Garage
- established 1993 -
will collect and deliver your vehicle from Colsterworth and around.
Cars & Light Commercial Servicing Repairs
MoT testing Recovery
AirCon service and repair
Troublesome code lights & diagnostics
Free courtesy vehicle
GAINSBOROUGH CORNER GARAGE
South Parade Business Park
South Parade
Grantham NG31 6HT
01476 575577

CROWN GAS & POWER
Switch Your Gas Supplier Today & Save
Call: 0161 762 1883 or Visit: www.crowngas.co.uk

Exchange Utility
British Gas
OPUS energy
SCOTTISHPOWER
SSE
e-on
edf
Switch Business Energy

Editorial

No space!!!

Stuart Whitcombe

ANOTHER LINCOLNSHIRE WORD

HUCK
Hip joint

DHH

FOCUS Scarecrow Fun

7th and 8th July 2018

The FOCUS Group invite individuals, families and groups located within the villages of Colsterworth and Woolsthorpe to build a scarecrow and display it in gardens or a permissible location, where it can be safely seen from the public footpath or road.

A prize will be awarded for the best scarecrow - so start building!
To enter: Cut out, complete and submit the Entry Form in this edition of In Touch
The FOCUS Group



Spotlight on F.O.C.U.S.

(Friends Of Colsterworth United Societies)

Well it's been and gone. No not the snow, the Kurling competition. It was held on 19th March. This year we had three lanes being used at the same time so it was pretty slick. We had three adjudicators, referees whatever you like to call them, to make sure everyone kept to the rules. I did well again this year, getting through to round two! Obviously no, improvement there then. Arriving at the quarter final the hall suddenly became quite tense. It wasn't completely silent but, shall we say subdued apart from the usual oohs and aahs. The ladies among us naturally wanted another to win, especially as Liz had kept the cup in such a lovely condition. However, it was not to be as the final was between Derek and Roland. In the end it was Derek who was the winner in a game that was well played. Keep the trophy well polished Derek!

We welcome two more members to our Thursday group and hope that they are able to take part in all the other activities that FOCUS offer. To those of our members who are not too well at present we send our best wishes.

LUNCHEON CLUB

While I was supervising my Granddaughter's lunch (baby sitting day) over thirty of our members were tucking into a superb lunch at the White Lion. I Now I wasn't there but several who were told me how much they enjoyed it. The food and service made it an enjoyable experience. Did no one think to bring me a doggy bag. June is planning the next lunch and more news on this will follow.

GAMES AFTERNOON

This is proving a pleasant way to spend an afternoon with many games on offer and again a way to meet new people. You don't have to be an expert of any game just come along and have a bit of fun. The next one will be held on April 11th. 2 pm to 4 pm.

By the time you read this, Easter will be over and the clocks will have gone forward and is that a sound of a lawn mower I hear? I am sure my neighbour said something about a BBQ too.

Whatever you are doing enjoy and take care.

I Hart
Woodland & Ground Care
Services Colsterworth
Barn dried seasoned hardwood logs
in bulk or nets
1 cubic meter bulk load £63
3 cubic meter bulk load £170
Kindling £2.50 per net
Delivery included for all areas
covered by In Touch
Tel 07968174905



KWR Seasoned Hardwood Logs

Free delivery (orders over £60)

& 10 mile radius NG33

Small net bags £4.00

Builders ton bags approx 1 cubic metre £60.00

Small truck load £100.00

Large truck load £150.00

Artic loads available.

Woodchip available

Email-kate@kwrplanthire.co.uk

Call - 0775770454 or 01476861342

MOLE CONTROL

Is your garden being destroyed by Moles?

Don't let it destroy your garden!

Get in touch with Cliff for more info
cliffordbanks@sky.com

07590819577 or 01476861862

Based in Colsterworth, I cover all the local surrounding area



Jubilee Garage (2016)

✓ Full and Intermediate Service.

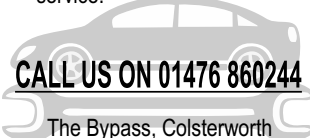
✓ MOT £45 - No re-test fee.

Only £35 if booked with a full service.

✓ All aspects of mechanical work undertaken to cars & light commercial vehicles.

✓ Competitive tyre prices.

✓ Free local collection & delivery service.



CALL US ON 01476 860244

The Bypass, Colsterworth

Jim Prior - Home & Garden

Handyman Services based in Corby Glen

Regular Gardening Work,
Decorating, Property Maintenance,
Conservatories Cleaned
Reliable, Friendly & Trustworthy
Free Quotes - Competitive Rates
07843 375542 / 01476 552040
www.jphg.co.uk

Phil's Building & Landscaping

✓ Pressure Washing

Free Quotes ✓ Fencing ✓ Patios Fully Insured
✓ Block Paving
✓ Driveways / Chipping

07808 044 896 ~ 01778 380906

D B Ostler Builder

For all aspects of building work, from a new build to just a garden wall, undertaken by a father & son team call

861190 or 07759 411024

Have Ostler - your local builder for over 20 years



Mini Digger & Skip loading dumpers Hire
With or without an Operator

Micro digger will go through most doorways, ideal for those jobs at the rear of your property

We now also offer:
The removal of all excavated materials away and supply sand, gravel and soil back to your property

For all further information and quotes call
Mark 07889 046430

A1 PLASTERING

Quality local, reliable service
All aspects of plastering
For a free, no obligation competitive quotation

Call Garry
01476 861903
07920054655



bespoke bar tailored to your individual requirements
Charlotte Wesson
M: 07967 770 736 T: 01476 861 903
www.stirrupcupmobilebar.co.uk



Meadow Chimney Sweeping Services

Craig Groves
07803 127 437
01476 385 285

meadowchimneysweep@hotmail.co.uk
Colsterworth, Lincolnshire

Open Fires, Wood Burners, Gas & Oil Flues swept using latest powered technology & vacuumed



LOOKING FOR LOCAL WORK?

WE HAVE WORK AVAILABLE IN YOUR COMMUNITY
HELP THE ELDERLY WITHIN YOUR LOCAL AREA TO STAY
AMONGST FAMILY & FRIENDS



- Work in your village or local area
- Varied hours available
- £8.30 p/h Mon-Fri, £8.80 Weekends
- Extra pay for B/holidays & Length of service
- 25p per mile mileage allowance
- Guaranteed hours
- Full training & support provided

Get in touch for an application pack
01529 497001

CompleatCare

STEP BY STEP

Professional Footcare

Delivered in your own home

Treatments Include:

Ingrown toenails & Nail Cutting

Fungal Infections

Corn Removal

Hard Skin Treatments

General Foot care

Contact Sabine Today

07753229992 or 01476 403147

Fully Qualified S.A.C. Dip. F.H.P

theW.I.

INSPIRING WOMEN

AGM time once again, is it me or do they get closer together as youth deficiency kicks in? With nearly a full complement of members, Helen Scorrer deputising for our President Janet Turner, who wasn't able to join us but is on the mend and hopes to be back with us soon, welcomed everyone including our W.I. Adviser Pat Read and our last month's guest speaker, Tina Claydon who went on to join the Institute during the afternoon. Our ordinary business included the decision of continuing our support of The Grantham Home Economics Group. Apparently the Home Economics Groups no longer come under the umbrella of the W.I. and Lincolnshire are the only Federation in the whole of the country which have the groups. The letter must have got lost in the post we presume! Anyway our group has changed its name so as not to include the "W.I." and we are to meet in May to give the members our decision.

We heard the report on the Spring Council Meeting which some of us attended recently. Members were told that they missed a treat as one of the guest speakers, the vicar of Ruskington, a Yorkshire woman had us in stitches. Please Colsterworth P.C.C. could we have her as our vicar? The church would be overflowing, what a character. The main speaker, author Julie Summers, has published her new book and like her book, "Jam Busters" the story of the W.I. during the last war was gleaned from diaries found tucked away in attics. She had copies of her books ready for us to buy (I told you that she would have didn't I a couple of months ago?). We didn't come away with any, but two things which we did bring back, firstly was the South Lincs Federation Valentine Cup awarded to the Institute with the most increased percentage membership during the year. We were most surprised to say the least. The second surprise was that Helen won the bursary raffle to go towards a

course at Denman College. She was well chuffed as we were for her.

County have some interesting trips and workshops lined up for us in the next few months. A trip to London to see the show 42nd Street in June, in September there is a trip to the National Memorial Arboretum at Lichfield, an outdoor archery taster session at Sleaford in May. In June a luncheon and talk at Burley Ladies Golf Club (the menu is looking quite tasteful and inviting). It's not all play and no work because there are workshops (Fun Flowers) and we are busy getting items ready for the big event at Navenby in October and car drivers are to be put through their paces at various locations. Oh and we are taking ourselves off to Leicester to see Calendar Girls at the De Montfort Hall theatre, but we will keep those needles clicking and stitching or whichever class we enter for the Make Bake and Show Exhibition won't we ladies? Following a plea from the school PTFA some of our more talented bakers are baking cakes for an event they are holding.

Normal business done and dusted then down to the Annual. The first job was for Pat to present the Rose Bowl for most points throughout the year, this year was a first, we had joint winners, Lynne Patte and Jilian Watson, we also had joint runner ups, Kathy Atter and Rosemarie Everitt. They all received gift tokens. The Stafford Trophy for the Flower of the Month competition was presented to Sandra Quinsee (she won it last year too), runner up was Jilian Watson, both received bouquets of flowers. We heard from the Treasurer that we are in a good state financially and that the year had been very busy according to the committee. Helen read our retiring President's (Janet) Address in which she thanked her officers and other committee members for their support through the year.

Pat Read said that it was great to see how the Institute had flourished over the last few years and said that the cup awarded by the Federation was well deserved.

She was thanked by Gillian Dexter with a bouquet to mark her retirement as our adviser. Our new committee will be enhanced with two new members, but with Janet's retirement we are now have a committee of seven who were elected en bloc. Pat's last job for us was to conduct the secret ballot for the Presidency which resulted in Sandra Quinsee being elected. She was presented with the President's Badge by Pat.

We were dying for a cup of tea after all that talking, so were very grateful when the tea hostesses, Audrey and Jilian appeared with trays of steaming hot cups and naughty nibbles to boot. The competition for an item, initial "M" was won by Yours Truly for a mouse sitting on a mushroom. Mary Cowley was runner-up with framed embroidered mouse. Jilian Watson was the winner of the Flower of the month competition with Sandra one step behind (we shall have to call the pair of them The Flower Girls, one or other of them seem to provide the goods each month).

Now for news of our next meeting which will be on Tuesday April 17th when our guest speaker, who the committee first saw at the Speakers Corner event last year, Dawn Oska who will give us "Hope for the Future". She is involved with the Mobile Chemotherapy Unit which does a tremendous amount of good ferrying patients to their appointments. We thought that she was very good when we heard just a fraction of her talk and are looking forward to hearing the rest of it. Competition is "a green item" (no live frogs please). There's always a warm welcome for any visitors (especially those like Tina) who care to join us, a good cuppa and always either bickies to dunk or a slice of cake to nibble. We look forward to seeing you on the 17th at the Sports and Social Club, usual time 2 o'clock. Oh, did you see that the crocuses have popped up again despite having their leaves mowed all too soon last year. Must be determined despite the odds!!!

Dot Williams

Great Wood Farm Early Years Centre



'Outstanding'

Nursery School and
Out of School Club

www.greatwoodfarmeyc.co.uk

01476 585584



Fantastic location at Boothby Pagnell
based on a farm
Forest School in adjacent woods

Free funded places
2 post-graduate
Early Years Professionals



News from Woolsthorpe Manor

It's been an interesting winter as we've had lots of investigation into the Manor House and we're still digesting the findings. You might have been watching East Midlands Today when they showed the newly-discovered windmill scratched into the wall by the fireplace in the main hall. We've also had someone in to take core samples of some of the beams to do some dendrochronology, and it looks as though there was quite a lot of building or refurbishment work going on while Isaac was a young boy. We're going to carry on investigating to see what else there is to discover - watch this space for more developments!

Over the Easter weekend we'll have our regular Cadbury Easter Egg Hunts, with trails for older and younger children, and there'll also be self-guided activities over the school holidays. We're now open for our summer hours, from 11am to last admissions at 4.30pm, but the Manor House is still closed on Tuesdays.

We're looking for new volunteers to welcome our visitors in the Manor House, Science Centre and Coffee Shop - if you have a few hours spare and could come in once a week or once a fortnight, we'd love to hear from you. Email woolsthorpemanor@nationaltrust.org.uk or call 01476 860338 (ext 100), or drop into the Ticket Office while we're open for an information pack.

Coming up

- Photography Drop-in day, **15 May**
- Stained Glass workshop, **19 June** - led by David and Gill of Strawberry Glass in Spalding
- see our website for more details: <https://www.nationaltrust.org.uk/woolsthorpe-manor>

Little Legs Nursery Colsterworth

Opening hours Monday - Friday
7am to 6pm

Nursery that offers full and part time
care all year round.

For babies from birth to 11 years old.
Holiday club.

Telephone 01476860053

Email: littlelegsteam@hotmail.co.uk

Or call in.

2 Graduate Leaders

Quality Care in a Welcoming Environment



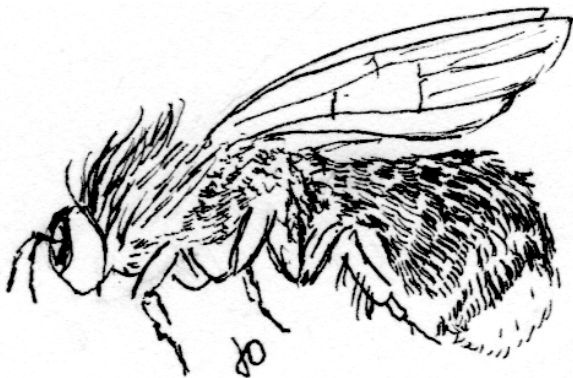
COLSTERWORTH & DISTRICT GARDENERS & ALLOTMENT HOLDERS ASSOCIATION

In spite of the miserable weather, a large number of members and ten guests attended our March meeting. They were rewarded by a thoroughly entertaining evening! Our speaker, David Tideswell, was talking about 'Garden Birds of Spring and Summer' and combined an encyclopaedic knowledge of his subject with a great deal of humour. He accompanied his talk with a wonderful selection of slides of birds, taken in his own garden. The evening concluded with extra special refreshments and a raffle - and everyone went home with their spirits lifted, in spite of the 'beast from the east', which is keeping us out of our gardens.

Hopefully, the weather will have improved by our next meeting and those members with vegetable gardens and allotments will be able to get to work on them as we have a very helpful talk on the topic of 'Growing Better Vegetables Next Season'. The speaker is David Thornton and he will be with us on Monday April 9th at 7.30, in the Village Hall. It is one of our Open Evenings and we hope keen vegetable growers, especially those with allotments, will come and join us for the evening. However, David's talk is not just for the specialist, and there will be plenty of useful hints for those of us growing only a few vegetables in corners of our gardens or in raised beds. As always, any queries, do phone **860312**.

Rachel Popham

NATURAL HISTORY BULLETIN



On March 16th we had, at long last, our first Spring-like day. The first butterflies - Brimstones, were seen in gardens. The first bumblebees were out. Unusually these were the Tree Bumble Bee, *Bombus hypnorum*, and not the buff or white tailed bees. Seven Spot Ladybirds climbed out of their winter headquarters in evergreen shrubs. Honey Bees were in such numbers as to be noticed by their buzzing (as in Shakespeare's "bee-loud glade"). Frogs were stirring up the waters in ponds (the first spawn reported on 13th March). On the verges the lesser Celandine and Coltsfoot flowers opened with a scattering of bright yellow. The white of the Daisies was also picked out in the sun. The white and mauve Sweet Violets had to be searched for as the flowers nestled low in the grass.

On March 17th the snow came back and it seemed the winter would never end. After several days of amber warnings on roads, and cancelled weekend events, the snow disappeared, remaining longest where it had drifted. We are left wondering how things not only survive but recover.

The ice over the pond protects life below it to some extent as it traps

in any warmth in the water below. It is the birds which can suffer, deprived of drinking and bathing water. It seems only some kinds of snow are taken in for a drink. Butterflies can find a place deep amongst leaves to go back into a semi-hibernation but it is important that they have found enough nectar whilst out to replace the energy expended in flight. The same is true for bees. The early emergence of the Tree Bumble Bee is interesting. It is a new immigrant to Great Britain, first recorded on the South Coast and working its way rapidly north, arriving in Lincolnshire only about three years ago. Like the Red Admiral it may have the problem of not surviving a longer dormancy period in our winters. It has adapted well to suburban conditions, taking over nest boxes rather than holes in trees. It has a dark body with just a small pale rump. Its most distinguishing feature is a tuft of long deep orange hairs on the front of its thorax, reminiscent of a punk hairstyle. This effect was added to by the Queens appearing on March 16th having a rather bedraggled appearance from their long stay in a hole in the ground.

Plants which continue to grow in winter possess a kind of anti-

freeze so that their cells don't rupture as ice forms. Early flowers cannot rely on insects to pollinate them. Many like the hazel catkins are wind pollinated. Violets have been seen visited by the early hoverfly *Rhingia* and the flower bee *Anthrophora* but they have another mechanism. Some flowers enclose the female parts within the male stamens and self fertilise without ever being exposed to frosts.



To Look for in April By the time the April edition of *In Touch* reaches you the days will be longer than the nights. There will be more growing hours for plants, more warming hours for insects. The hours of daylight, unlike temperature, are in a fixed seasonal cycle. Since Christmas, wintry conditions and illness may have plagued us. Certainly less natural history records have been sent in. More than usual I look forward to your natural history observations at **61 Woolsthorpe Road, 860465**, e-mail jnostler@hotmail.co.uk

Jane Ostler

GRA'S HANDYMAN SERVICES

- LAWNS MOWED
- PRUNING TREES
- FENCING & OUTBUILDING MAINTENANCE
- REGULAR, SEASONAL AND ONE-OFF JOBS
- HEDGES TRIMMED
- SHEDS RE-FELTED
- ALL RUBBISH CAN BE REMOVED

REGISTERED WASTE CARRIER

01476 860829 07814 063489
Call now for a free quotation

NEW WEBSITE **hp** **NEW WEBSITE**

Harrison Print

www.wgharrisonprint.co.uk

Unit 11, The Turnpike, Turnpike Close
Grantham, Lincolnshire, NG31 7DF
Tel 01476 562700 Fax 01476 562700
Email wgharrisonprint@btconnect.com

FOR ALL YOUR PRINTING REQUIREMENTS

SQUARK DESIGN

www.squarkdesign.co.uk

Call: 07582 412494

For all your Graphic Design needs!

Graphic Design
Marketing
Advertising
Branding/Logos
Illustrations
Menus & more.

We offer a complete design, print and delivery service.

KELLECTRIX

For All Your Electrical Needs

- Rewires
- Minor Works
- Security Lighting
- Intruder Alarms
- Extra Sockets
- Smoke Alarms
- No Job Too Small

Call Steve on 07809 220359 or 01476 501000 for a free quotation

Robert G. Marriott
Heating, Plumbing & Building Contractors



"Croxtan View", Main Street, Saltby
nr Melton Mowbray, Leics LE14 4QW
Tel: (01476) 860265

GLENSIDE COUNTRY PRACTICE

A RURAL COUNTRY PRACTICE PROVIDING A FULL RANGE OF NHS AND PRIVATE SERVICES

- Surgeries at Corby Glen and Castle Bytham
- Open 8.30am-6.30pm - 5 days a week
- Opening until 7.30pm on Monday and Thursday
- Four Doctors and two practice nurses—hence more appointments every day
- Dispensary present at both surgery sites.
- Repeat medications available within 2 working days
- Online prescription ordering, appointment booking/cancellation and text reminder service for appointments
- Dedicated 24hr prescription ordering line
- Active patient participation group
- GP Survey 2014 showed 96% of patients were able to get an appointment to see or speak to someone the last time they tried

www.glensidecountrypractice.com

P W Plumbing & Heating

Oil Boiler: Servicing & repairs/ installation

Bathroom: design & installation

Kitchen: design & installation

Full installation of heating systems

Unvented cylinders / Underfloor heating

07801 496407 / 01476 861189

For all your plumbing needs

market cross SURGERY

GP PARTNERS

Dr John Elder
MBChB MRCP DRCOG DCH DFFP

Dr Kiki Steel
MSc MBChB DRCOG DFRSH

Dr James Barratt
MBBS MRCP DCH Dip Occ Med

NHS Services
Practice Nurse Clinics for Diabetes, Asthma, COPD
INR Monitoring
Family Planning
NHS Health Checks
Teenage & Young Persons Health Clinics
Extended Hours for Routine Appointments
Minor Injury Unit

Normal Opening Hours
Reception: Monday to Friday 0800 to 1830
Dispensary: Monday to Friday 0830 to 1830

Extended Hours
Appointments on alternate Monday evenings and Saturday mornings

Market Cross Surgery
Bourne Road
Corby Glen
Lincs
NG33 4BB
Tel: 01476 550056

Practice Manager - Mrs Louise Allen
www.marketcrosssurgery.co.uk
email: reception@pc83649.nhs.uk

PRACTICE NURSES

Clare Burrows
Dip N, BSc (Hons)

Chris Day
RGN, RSCN, Dip HE Chronic Disease Mgt

Mrs Mary Elder
BSc (Hons), RGN, Family Planning Nurse

Private Services
Vasectomy Clinic
Driving/HGV/Employment/Sports Medicals
Travel Advice/Immunisations
Anti-Malarial Drugs & Yellow Fever Centre
Acupuncture
Private Consultations

Glen Eden Medical Aesthetics
Muscle Relaxing Anti-Wrinkle Injections
Juvederm & Restylane Dermal Fillers
Laser and IPL Treatments for Skin
Tightening, Skin Rejuvenation,
Leg Veins & Hair Removal,
Rosacea & Facial Redness,
Treatment for Excessive Underarm
Sweating (hyperhidrosis),
Pigmented Skin Lesions & Sun Damage

Colsterworth Church Isaac Newton Project wins National Lottery support

Colsterworth Parochial Church Council has received a National Lottery grant of £10,000 from the Heritage Lottery Fund (HLF) for an exciting new project, the Colsterworth Church Isaac Newton Project. Made possible by money raised by National Lottery players, the project will enable us to appoint an architect to advise on the best ways of restoring the Newton Family Chapel and improving the building's facilities.

St John the Baptist church is a Grade 1 listed building and one of the oldest churches in Lincolnshire, dating back to Saxon times. Its association with the Newton family is important: Isaac was baptised here in 1642, his family worshipped here, and his parents are buried inside the church. Part of the font in which Newton was baptised is still in use today, and the church possesses a sundial carved by him with a penknife when he was 9 years old. The Newtons' connection with the church is not well known and this project will begin work to raise awareness in local, national and international communities. The project will investigate the best options for providing new toilets, a servery, new seating, and improved heating and lighting. The aim of these plans is to provide a more flexible space and a more welcoming atmosphere both for regular church services and for use by the local community for a variety of events and activities. Once restored, the Newton Family Chapel could become a place for small services, worship and prayer.

The National Lottery funded project will also explore options for a new Heritage Learning Centre, which would focus on science and faith in Newton's life and work and encourage visits by school parties. The Project Leader, Peter de Voil comments, 'We are delighted to have received this support from National Lottery players and hope that the project will lead to a building which will provide much needed facilities for members of the local community and a worthwhile educational experience for school children and visitors from home and abroad.'

For further information, interviews and images, please contact Project Leader, Peter de Voil 01476860811 or devop@btinternet.com in case anyone has any questions or comments.



Photo by Collin Russell

(L to R) Councillor Bob Adams, Church Wardens Peter Smith and Simon Jowitt, Project Leader Peter de Voil

FOCUS Spring Walk (1 hour plus...)

Focus on.....Buckminster.

When: Tuesday April 24th, 10am start.

Where: Park and meet in the car park of the Tollemache Arms then walking in the village and surrounding countryside.

Who: All welcome.

Queries to Peter Baldock **01476 860293**

Entry Form	FOCUS SCARECROW FUN		7/8 JULY 2018
Name:			
Address:			
Telephone No:			
E Mail Address:			
Location of scarecrow display if different from address above:			
Entry Fee:	I/We enclose an entry fee of £2. I/We agree to abide by the judges' decision. Tick <input type="checkbox"/>		
Optional: you may provide additional information, if you wish e.g. brief description			
Signature:			
Return to:	15 Bourne Road, Colsterworth OR 61 Woolsthorpe Road, Woolsthorpe by Colsterworth Please return in sealed envelope marked "FOCUS Scarecrows"		

ATTENTION GARDENERS!

There will be an Open Gardens event in the villages over the weekend of **7th/8th of July**. Colsterworth gardens will open from **10:00am-4:30pm on Saturday**, Woolsthorpe from **10:00am-4:30pm on the Sunday**. Proceeds from ticket sales will go towards the upkeep of St John the Baptist Church. We have enough gardens to go ahead but we could do with one or two more in both villages. If you think it would be suitable, would you consider opening your garden for one day? This would involve checking people have a ticket, and allowing them to look around your garden. Your garden does not have to be perfect. People are interested to see different plants and garden layouts. We want the Open Gardens to be an enjoyable village event. There will be refreshments, plants for sale, artwork displays, a garden quiz and the Scarecrow Festival on at the same time, so it should be a good weekend. Of course the weather will be perfect! If you think you might open your garden for us, please contact us on **colsterworthgardens@btinternet.com** or phone Diane Lacey on **862065** before April 15th.

Village Garden Fete – 23rd June

Plans are progressing for Colsterworth Garden Fete to take place on **23rd June** at Millfield House, Back Lane by kind permission of The Shires, part of Acorn Care & Education. The Garden Fete is again being organised by members from the two village churches and this year they will be supporting Grantham Food Bank as their local charity. Any local organisation or business that would like to be involved should contact Pamela Harrison on **01476 861864**. The organisers are also appealing for donations for the "Nearly New Stall" and donations of home made cakes for the Cake Stall and refreshments. A cavalcade of classic & collectable cars will also feature again this year with a drive through the village, ending with a static display at Millfield House. Entries are invited by email to Robert Taylor **rh.taylor260@tiscali.co.uk** or **07831 256808**.

Do something amazing.....

Help us to give girls in our local community more opportunities for fun, friendship, challenges and adventure. Helpers are essential to keep groups running. They help leaders to plan and run meetings, whether you want to help out at weekly or as part of a rota system, you'll be a brilliant support for leaders and girls. Brown Owl would love to hear from you if you'd like to help with Colsterworth Brownies. For more information visit our website **www.girlguidng.org.uk** I look forward to hearing from you. Ruth. **ruth.hollis@btinternet.com** or **07785236302**

VILLAGE PLAY AREAS AND PLAY EQUIPMENT

We are lucky enough to have children's play areas in:

- Woolsthorpe by Colsterworth
- Old Post Lane, Woolsthorpe by Colsterworth
- Village Hall North Witham
- Colster Way, Colsterworth.

Please can parents and carers to contact the Parish Clerk if they notice any issues at the play areas.

Tel: **01476 861888**: Email: **clerk.colsterworthpc@gmail.com**

EweMove Grantham South & Sleaford Has Now Launched!



Hi Im Rachel, Im here to help with your property needs.

To Get Your **FREE** Online Valuation Report Visit: **www.EweMove.com/GranthamSouth** Or Call 24/7: **01476 858 570**

Bonfire smoke

I would like to apologise to all Bridge End residents for my bonfire smoke. The river board has cut down overhanging branches on the River Witham and left me with a lot of wood on my river bank. Paul Peasgood

Bowls Club

The bowls club will be having an open day on 28th April 2018 at 2:30pm. All are welcome to give it a go. Any questions ring Barrie Grosse on **01476860756**



Mobile Hairdresser Bridal Specialist Charlotte
01476 861903
07967 770736

www.charlottewesson.co.uk



Main Street, Market Overton
LE15 7PL Tel. 01572 768073

Café and Play Area open
Mon - Sat 8:30-16:30 all year

J N MORRIS & SON

Established 1979

Post & Rail Fencing
Gates Oak Beams
Oak Sleepers Pergola Kits
and much more

Honey Pot Lane Sawmill

NG33 5LZ

01476 860109

Castlegate Practice @ Buckminster

Mark Duffree, M.Med.Sci. D.O.
Registered Osteopath

Laura Daniels, MSc MCSP MMACP
Chartered Physiotherapist

Buckminster Yard
Buckminster
Grantham
Lincs NG33 5SA

Tel: 01476 590845

Email: **castlegateosteos@btinternet.com**
www.granthamosteopath.co.uk

FARM LOGS

KILN DRIED SEASONED
Full Load £120 Full Load £85
½ Load £70 1 load +1 = cubic metre
www.farmlogs.uk

Call Rob or Emma
07496 121582 or 01780 410985
....and we stack!!

Purr-Fect Solutions

Dog walking and Pet Sitting Service covering Colsterworth and surrounding Villages
Friendly, Reliable and Reasonable,
Husband and Wife Team
Home 01476 861862
Mobile 07590 819577
cliffordbanks@sky.com

PIANO, KEYBOARD AND FLUTE LESSONS

VANESSA JACKSON
BA HONS/PGCE
EXPERIENCED TEACHER
CRB CHECKED
MOB. 07857 810518
email **vanessajackson@outlook.com**



Crown Oil
Environmental Limited

Services We Offer

Call Us Today
For More Information
0845 872 3344
Or Visit Our Site Below



http://www.CrownOilEnvironmental.co.uk



Crown Oil
Fuels and Lubricants

We Supply Red Diesel, Diesel, Kerosene, Heating Oil, Carbon Offset Red Diesel, Bio Diesel, Kleenburn Kerosene, Furnace Fuel and Lubricants Throughout the UK on a Same or Next Day Delivery Service.

Call us Today on 0845 313 0845 or visit
http://www.crownoil.co.uk
For More Information



IT Support and Training for Home Computer Users and Small Businesses

No local call out charges
30+ Years experience
Friendly and Efficient
Competitive pricing



Wireless & Network Setup
PC Maintenance & Repair
Tablet support & training
PC Training - ALL levels
Broadband configuration
IT Equipment Sales
Media conversion Video/audio

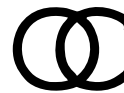
01476 550604 / 07894 659479
www.litespc.co.uk info@litespc.co.uk

Quality Websites for Small Businesses and Organisations



Web Site Design
Web Site Management
eCommerce Solutions
Facebook/Twitter Business Setup
Search Engine Optimisation
Web Design Training
Cloud Storage & Backup Setup

Free web site design consultations for local businesses



01780 720 516
0780 901 6722

Octopus Computers

For ALL your computing needs


Hardware Software
Websites E-mail
Broadband Networks
Support Security
Microsoft Apple

In your home or office

Working for more than a decade in Stamford and Rutland

info@OctopusComputers.com
www.OctopusComputers.com

**The Parish Church of
St John the Baptist Colsterworth**
The parish church of Isaac Newton's family



The Colsterworth group of parishes is currently in vacancy. Pending the appointment of a new rector, **please contact any of the people below.**

Church Wardens	Peter Smith	860218
	Simon Jowitt	07903 390151
Treasurer	Peter de Voil	860811
Secretary	Hazel Taylor	860605
PCC Members	Peter Baldock	860293
	Hilary Winstanley	861160
	June Tucker	07802 757607

The church is open during daylight hours for visitors, meditation and private prayers.

APRIL SERVICES AND EVENTS

Sun	1st	11:00am	Easter Sunday Group Holy Communion
Tue	3rd	10:00am	Church Coffee Morning 11 Woodlands Drive courtesy of Tony and Nicky Watkinson
Sun	8th	11:00am	Morning Prayer
Sun	15th	11:00am	Group Holy Communion
Sun	22nd	11:00am	Morning Prayer
Wed	25th	7:00pm	Annual General Meeting in Church (followed by PCC meeting)
Sun	29th	10:30am	Joint Worship at Methodist Chapel

MAY

Sun	6th	11:00am	Group Holy Communion at Stoke Rochford
-----	-----	---------	--

Annual General Meeting
Wednesday 25th April 2018 at
7:00pm in church
(to be followed by Parochial Church
Council Meeting)

www.colsterworth5.org.uk

APRIL OPENING TIMES

COLSTERWORTH POLICE OFFICE, BACK LANE, WILL BE OPEN ON :

Thursday 5th April – 4pm – 6pm

Thursday 12th April – 4pm – 6pm

Saturday 21st April – 10am – 12noon

Saturday 28th April – 10am – 12noon

FREE MESSAGE IN A BOTTLE

Record your health history and medicines prescribed in one easy, accessible place. Recognised by the Emergency services.

Call into the office and pick up a bottle

Helen & Steve Bill

Police Support Volunteers



NORTH WITHAM VILLAGE HALL

Contact Katie Addlesee 01476 247017 or Jane Hawksworth north.witham@gmail.com
for Village Hall matters and bookings

FOR HIRE

COLSTERWORTH VILLAGE HALL

For your Party, Meeting, Conference,
Wedding Reception.

We offer Large Hall, Good Parking,
Kitchen, Performance Stage.

With Newly installed-Mood Lighting,
Free Wi-Fi.

Call Eileen 01476 860459



Colsterworth

Sports & Social Club

**Now Showing Sky & BT Sports
Function Room Available**

for Parties, Meetings, Receptions

Call Rose on 860487

for details, bookings

Colsterworth Methodist Church

860046

Minister: Rev'd Ian Worrall

142 Princess Drive, Grantham, NG31 9PY

Tel: 01476 564191

Email: minister.hlane@btinternet.com

Village Contact: **Pamela Harrison** - 01476 861864

A warm welcome to all our services and events



April 2018

Date	Time	Service	Preacher	Flowers
1st	10:30am	Easter Sunday Worship	Rowena Ward-Barrow	Margaret Russell
8th	10:30am	Holy Communion	Rev'd Ian Worrall	Christine Hodson
15th	10:30am	Morning Worship	Rev'd Martin Smithson	Betty Neal
22nd	10:30am	Morning Worship	Rev'd Peter Lolley	Tracey Barrett
29th	10:30am	United Service	Rev'd Steve Potts & Rev'd Ian Worrall	Helen Scorrer

Open Door – 11th & 25th April 11am - 1:00pm - Please call in at any time for Friendship, Morning Coffee, Take-Aways, Light Lunches and the Charity Shop.

Craft & Chat Group – 4th & 18th April 3:30pm. Bring your own craft along and join our group for a cuppa, a chat and maybe an opportunity to learn new skills.

Villages Diary APRIL 2018

Tue	3rd	7:30pm	Parish Council	Colsterworth Village Hall
		10:00 am	Coffee Morning	11 Woodlands Drive
Wed	4th	3:30pm	Craft & Chat Group	Methodist Church
Mon	9th	7:30pm	Garden Club	Colsterworth Village Hall
Tue	10th	1:30pm-3:30pm	Art Group	Colsterworth Village Hall
Wed	11th	11am-1pm	Open Door	Methodist Church
Mon	16th	8pm	Book Club	The White Lion
Tue	17th	2:00pm	Women's Institute	Sports & Social Club
Wed	18th	3:30pm	Craft & Chat Group	Methodist Church
Mon	23rd	10am-11am	Mobile Library	Methodist Church Hall
Tue	24th	1:30pm-3:30pm	Art Group	Colsterworth Village Hall
Wed	25th	11am-1pm	Open Door	Methodist Church

Mobile Post Office

Stopping by Colsterworth Bowling Club

Monday, Tuesday, Thursday, Friday - **9am to 11am**

Wednesday - **1:30pm to 3:30pm**

Contact Andy on **01778 570221**

Weekly

Mondays	9am-3pm	Pre-school	Methodist Hall
	10am-noon	Kurling	Village Hall
	5.30-7pm	Brownies	Village Hall
	7.15pm	Bell Ringers	Church
Tuesdays	9am-3pm	Pre-school	Methodist Hall
2nd & 4th	1.30pm-3.30pm	Art Group	Village Hall
	6-7pm	Yoga	Village Hall
Wednesdays	9am-3pm	Pre-school	Methodist Hall
	11.30am-12.30pm	Vitality Movement and Music	Village Hall
2nd & 4th wks	11am-1pm	Open Door	Methodist Church
	7.30-8.30pm	Bootcamp	Village Hall
Thursdays	9am-3pm	Pre-school	Methodist Hall
	10am-noon	Kurling	Village Hall
	2pm	Line Dancing	Village Hall
Term time	5.30-7pm	Beavers/Cubs	Village Hall
Fridays	9am-3pm	Pre-school	Methodist Hall
	7.30-9.30pm	Weekly Bingo	Sports & Social Club
Saturdays	10am-12	Football Coaching	Sports Field

**Copy for next month's issue of In Touch must arrive by noon on
Sunday 22nd April 2018**

Email contributions to stuartwhitcombe@hotmail.co.uk

The deadline date is final and copy may not be included if there is a shortage of space.

Please submit your copy as early as possible.

Images and/or artwork submitted in digital formats **MUST** be at a resolution of 300dpi.

Ensure that you put your contact details on any submission.

Send or deliver hard copy to **5 Stephenson Close, Colsterworth NG33 5GP (Tel:07773 230815).**

Remember to give dates of future meetings if you want them to appear in the Villages' Diary.

The Publishers accept no responsibility for goods or services advertised for sale in this magazine.

The acceptance of advertising does not in any way imply that the advertiser is endorsed by the Publishers.

Published by Colsterworth and District Parish Council ©2018